

## L'application iPad WHSProStation



Emmenez votre WHSProStation partout avec vous.

Graphiques plein écran, affichage des positions, ordres et alarmes.

Plus de 30 indicateurs et outils d'analyse technique disponibles.

Découvrez tout ce que l'application iPad WHSProStation a à offrir.



**Présentation générale**

**Recherche et sélection de symboles**

**Graphiques**

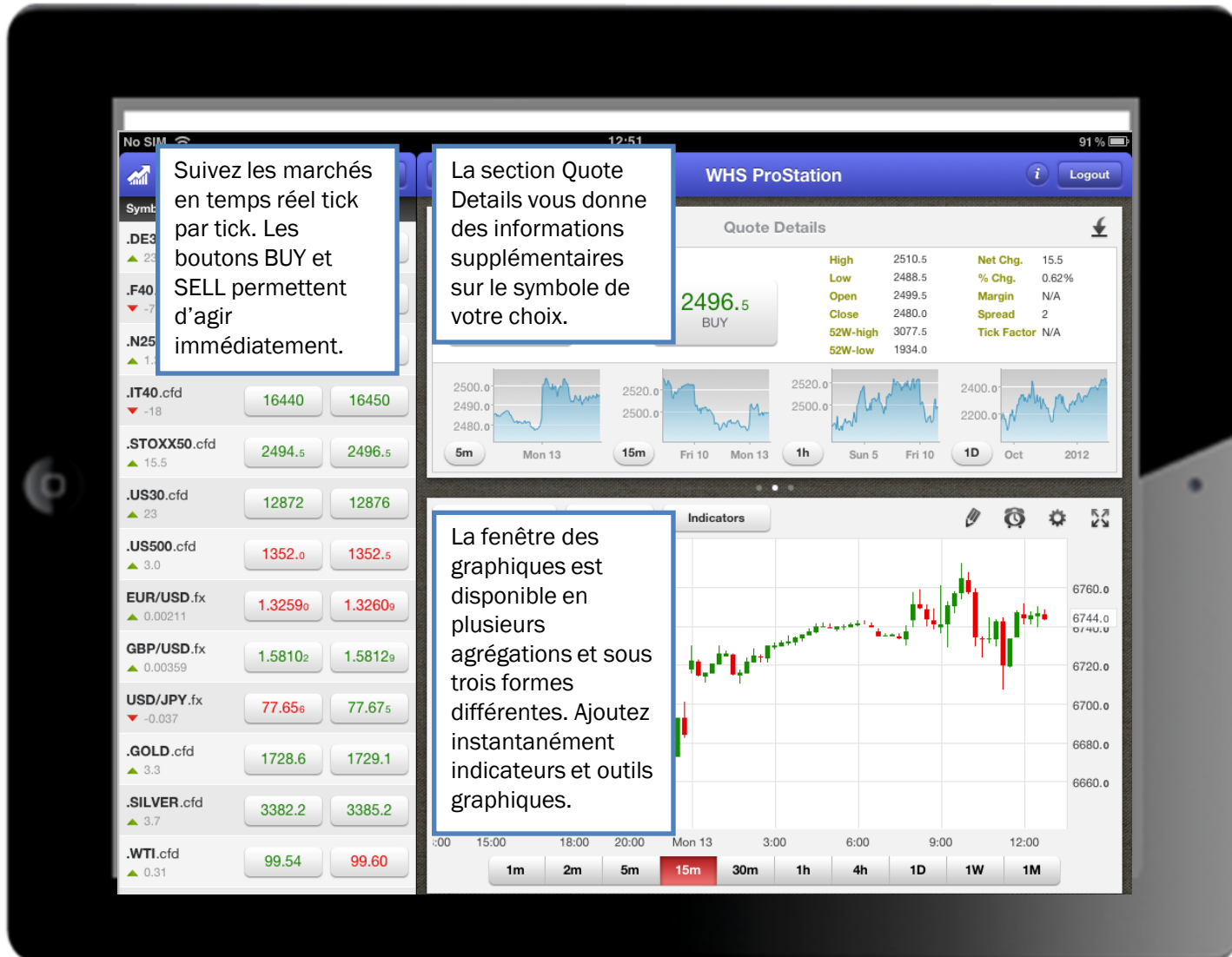
**Analyse technique**

**Ordres**

**Alarmes**

**Support**







# Présentation générale

Parcourez les différents tableaux de cotations.

**Tablet: Quote Details for .US30.cfd**

US Wall Street 30 cash	High	12899	Net Chg.	22
	% Chg.		Margin	N/A
	Spread		Read	4
	Mark Factor		N/A	

**Smartphone 1: Market List**

Symbol	Sell	Buy
.DE30.cfd	6741.8	6742.8
.F40.cfd	3387.3	3388.3
.N25.cfd	322.6	322.8
.IT40.cfd	16448	16458
.STOXX50.cfd	2493.5	2495.5
.US30.cfd	12869	12873
.US500.cfd	1351.5	1352.0
EUR/USD.fx	1.32548	1.32566
GBP/USD.fx	1.58046	1.58074
USD/JPY.fx	77.661	77.678
.GOLD.cfd	1728.4	1728.9
.SILVER.cfd	3380.5	3383.5
.WTI.cfd	99.52	99.58

**Smartphone 2: 15 min Chart for .DE30.cfd**

Symbol	Sell	Buy
.DE30.cfd	6739.3	6740.3
.F40.cfd	3386.8	3387.8
.N25.cfd	322.6	322.8
.IT40.cfd	16448	16458
.STOXX50.cfd	2492.5	2494.5
.US30.cfd	12869	12873
.US500.cfd	1351.7	1352.2
EUR/USD.fx	1.32534	1.32553
GBP/USD.fx	1.58020	1.58045

**Smartphone 3: Net Change Order Entry**

Symbol	Net Change	Order Size
.N25.cfd	322.5 (SELL) / 322.7 (BUY)	1
.IT40.cfd	16445 (SELL) / 16455 (BUY)	1
.STOXX50.cfd	2492.5 (SELL) / 2494.5 (BUY)	1
.US30.cfd	12868 (SELL) / 12872 (BUY)	1
.US500.cfd	1351.7 (SELL) / 1352.2 (BUY)	1
EUR/USD.fx	1.32530 (SELL) / 1.32547 (BUY)	1

Open Positions Working Orders (3) Filled Orders Alarms (1)

Symbol	B/S	Size	Price	Type	Status	Expiration
2811448 (EUR)						
.DE30.cfd	BUY	1	6800.0	LMT	WORKING	GTC
.DE30.cfd	SELL	1	6825.0	LMT OCO	CONTINGENT	GTC
.DE30.cfd	SELL	1	6750.0	STP OCO	CONTINGENT	GTC

WHS ProStation

Quote Details

Naviguez entre les Quote Details, les informations du compte et les LiveNews.

.STOXX50.cfd

Quote Details

EU Stocks 50 cash

2494.5 SELL 1 x1 2496.5 BUY

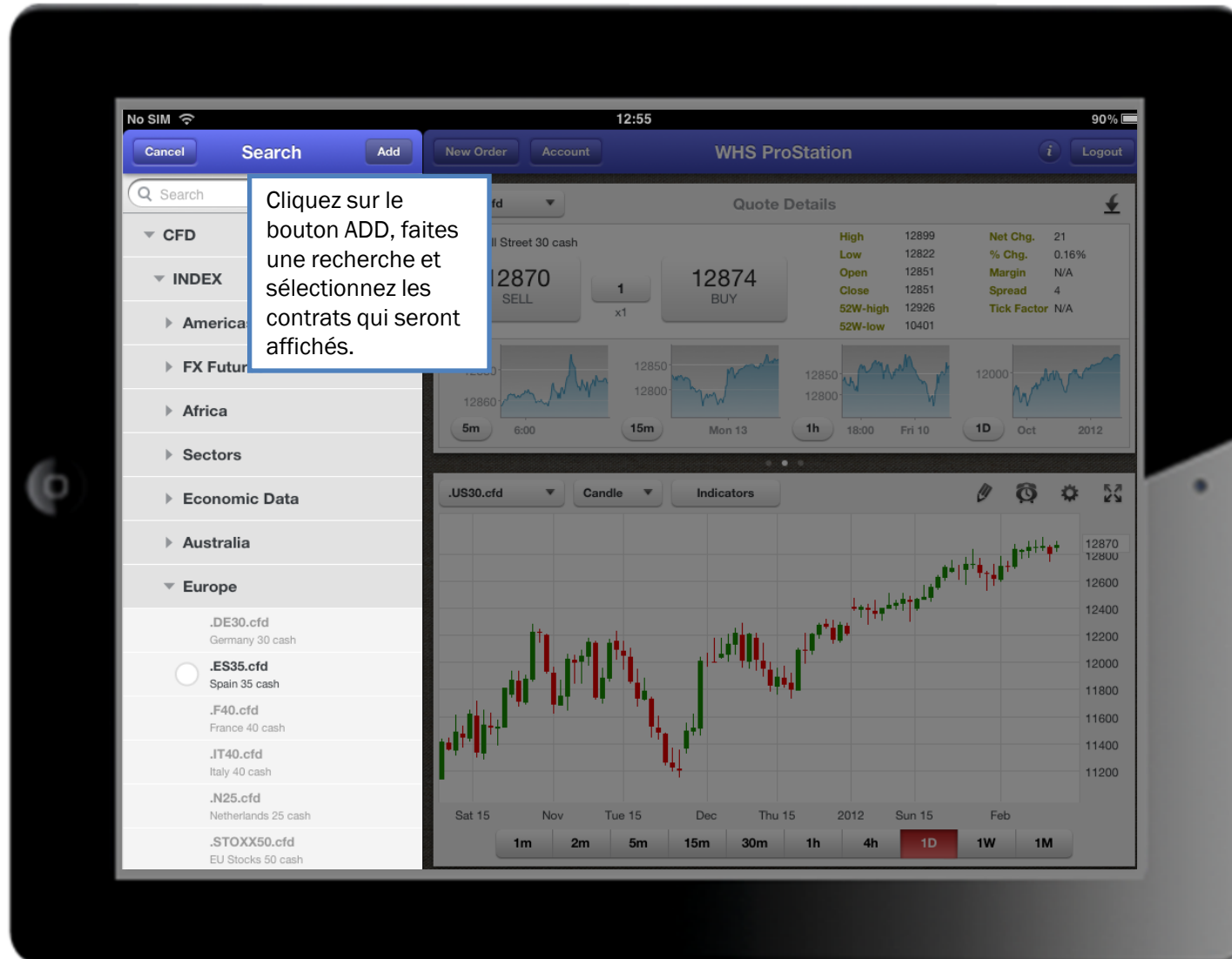
High	2510.5	Net Chg.	15.5
Low	2488.5	% Chg.	0.62%
Open	2499.5	Margin	N/A
Close	2480.0	Spread	2
52W-high	3077.5	Tick Factor	N/A
52W-low	1934.0		

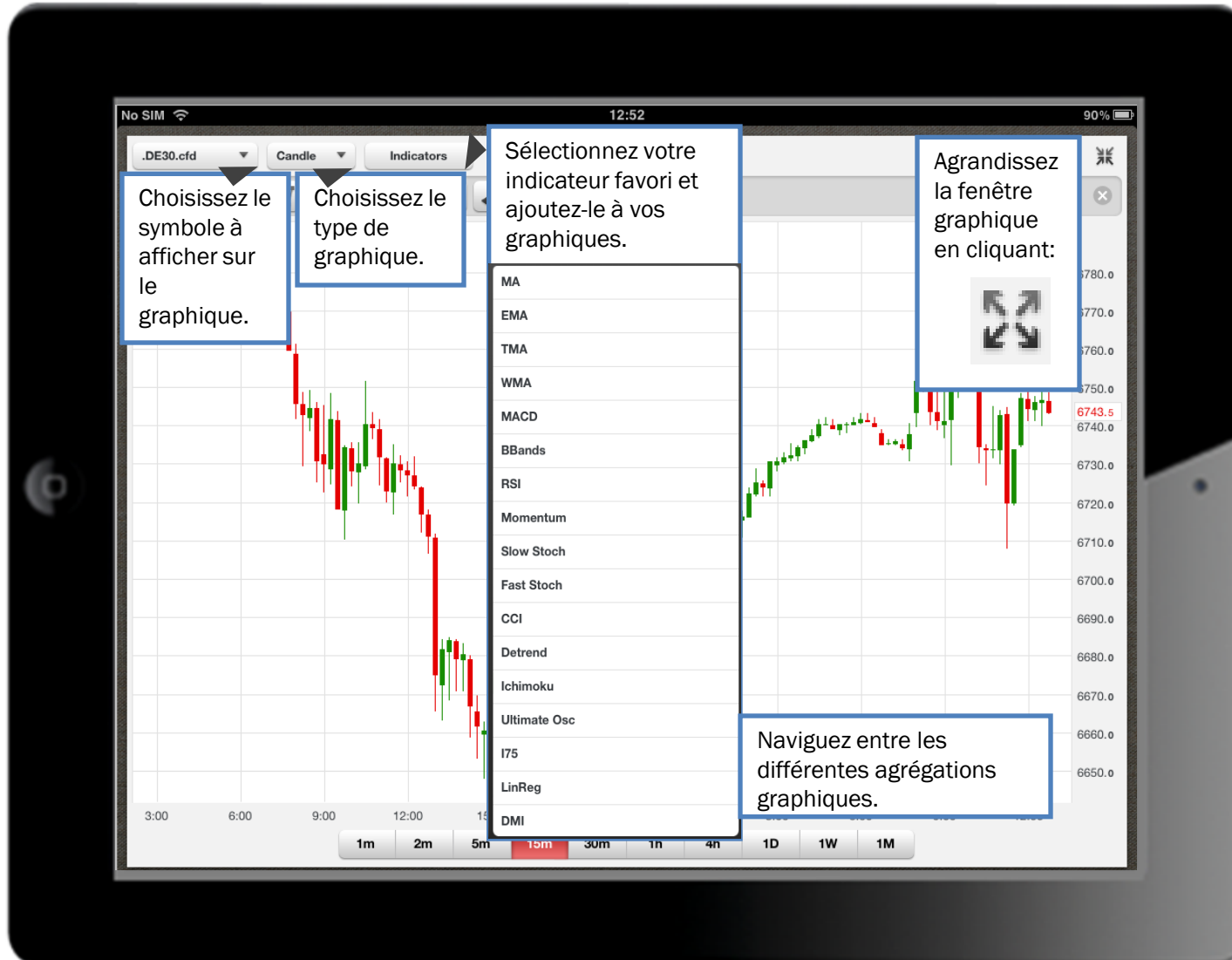
Today's News

- 13 February 2012 12:49 - 7 minutes ago (IGM)[EU'S REHN] has welcomed the Greek parl vote (to pass the austerity plans) as it is a sign of their...
- 13 February 2012 12:39 - 17 minutes ago (IGM)[EUROPEAN FX MORNING ROUNDUP] There is nothing to come on the North American front so it could be an...
- 13 February 2012 12:29 - 27 minutes ago (IGM)[EMU LATEST] [BANK OF ITALY] is exploring technical problems with the submission of bids at its BOT aucti...
- 13 February 2012 12:29 - 27 minutes ago (IGM)[EUR/SEK] is finding it hard to follow in the footsteps of the sell-off in [EUR/NOK]...
- 13 February 2012 12:19 - 37 minutes ago (IGM)[UK TSY MIN HOBAN] has expressed his disappointment over news that five UK banks that signed up to the...
- 13 February 2012 12:09 - 47 minutes ago

.GOLD.cfd	1728.4	1728.9
.SILVER.cfd	3381.7	3384.7
.WTI.cfd	99.54	99.60







Choisissez le symbole à afficher sur le graphique.

Choisissez le type de graphique.

Sélectionnez votre indicateur favori et ajoutez-le à vos graphiques.

Agrandissez la fenêtre graphique en cliquant:



Naviguez entre les différentes agrégations graphiques.



